

For more information contact the
Macomb Area Convention & Visitors Bureau
201 S. Lafayette St. • Macomb, IL 61455
(309) 833-1315
email: macvb@macomb.com
<http://www.macomb.com/macvb>



Printed in the U.S.A.
2/2000 • 20M
Printed on recycled paper

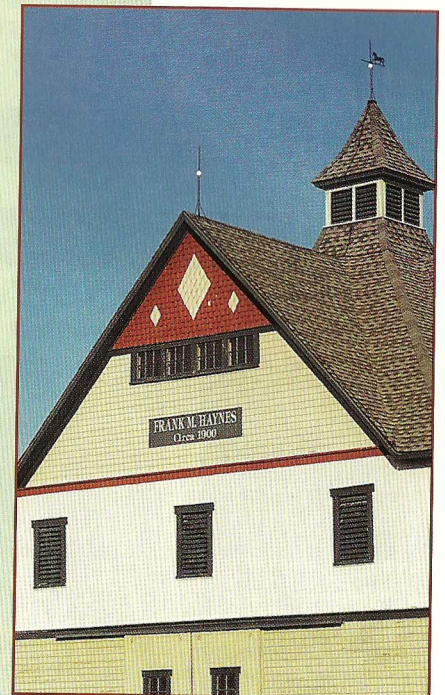
201 S. Lafayette St.
Macomb, IL 61455

Macomb Area Convention & Visitors Bureau



Historic Barns

of
McDonough
County



Discover . . .

the beauty of rural life by viewing our historic barns nestled in the countryside of McDonough County. These wooden barns are in good to excellent condition and are very old – the newest ones have stood for 75 years. An unusual true-round is showcased, as well as the locally unique cross-gable.

This brochure guides you through four tours. A picture of each barn along with the style, year it was built, and a short description are included.

Some of the farmsteads you will see frequently welcome visitors. In some cases you may catch a family member outside and be able to ask questions. In the absence of a direct invitation, please respect the family's privacy and view their barns from the road.

As you explore McDonough County, you will see great expanses of flat prairie, rolling hills, bottomland, and wetlands. From the rich black dirt plowed in the Spring to the golden hues of harvest, you will get a sample of our rich agricultural heritage.

Whichever season you choose to visit, be sure to savor all the beauty McDonough County offers. We hope you enjoy the barns!

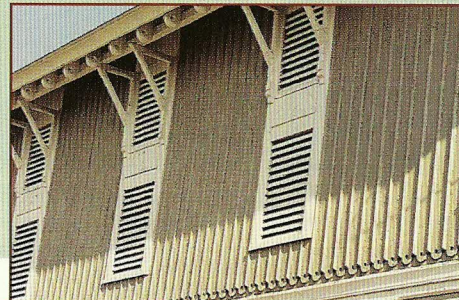
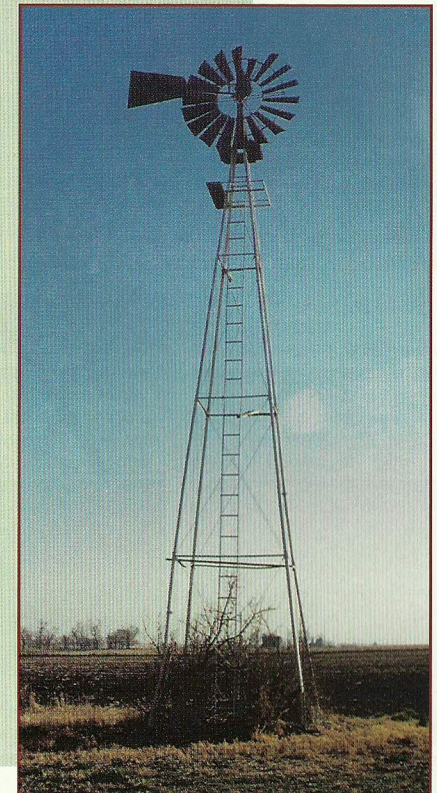
For more information about Macomb or McDonough County, please contact:

Macomb Area Convention and Visitors Bureau

201 S. Lafayette St.
Macomb, IL 61455

309.833.1315 phone
309.833.3575 fax

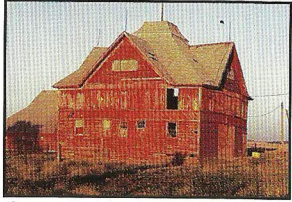
email: macvb@macomb.com
<http://www.macomb.com/macvb>



TOUR 1 ▲ 1-6

1. Doner Barn

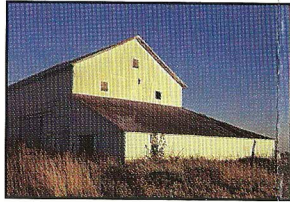
2300N-1900E



Cross-Gable Built in 1908
Constructed on a foundation of sandstone piers, the barn is original. Even the driveway with wooden flooring remains. One corner of the barn was designed to house 2 carriages.

2. Walters Barn

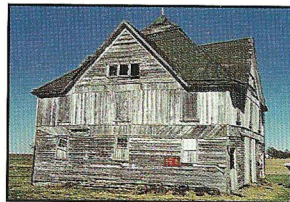
2150N-2100E



Stick-style Built in 1870s
All the original lumber for this barn was floated down the Mississippi River and hauled overland by oxen. Mr. Walters is proud to possess one of the ox shoes used during the project.

3. Brock Barn

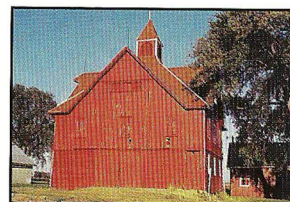
2100N-2300E



Cross-Gable Built in 1910
This barn replaced an earlier barn destroyed by an arsonist's fire. A neighborhood youth set a total of 7 barn fires in the area before hanging himself in a barn down the road.

4. King Barn

2050N-2100E



Cross-Gable Built in 1898
With its original fancy cupola, this barn is a fine example of the cross-gable style, popularized by builder Newt Willis.

5. James Barn

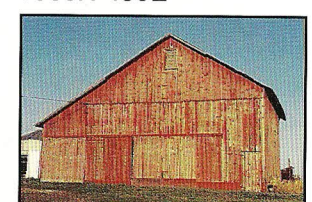
1850N-1200E



Board & Batten Built in 1868
Built shortly after the Civil War, lower level is accessible from the east, and designed with cattle horse stalls. Upper level is accessible by drive to door.

6. Calvert Barn

1900N-450E

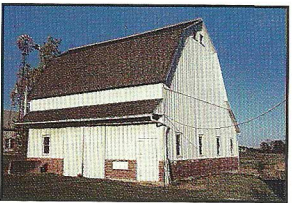


Simple Gable Built approximately 1880
Original sills were hand-hewn with pinned joints. New concrete foundation in 1940. Currently used to store lumber and machinery.

TOUR 2 ● 7-18

7. Hamilton Barn

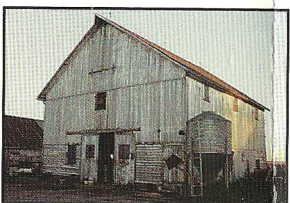
1800N-1400E



Hip-Gambrel Built in 1920
Barn has window sills of native walnut harvested from this farm. It has been maintained in its original state.

11. Short Barn

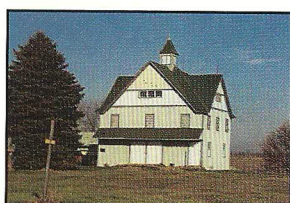
1300N-2000E



Half-Pitch Roof Built in early 1900s
H.K. Ogden from England, built this barn, and lived in nearby Bardolph. The barn is used to house sheep today.

15. Redman Barn

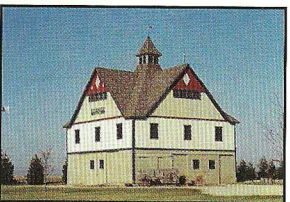
1300N-1600E



Cross-Gable Built in 1895
One of the oldest Newt Willis Cross-Gable barns. Listed as a historic landmark and well maintained.

16. Flack Barn

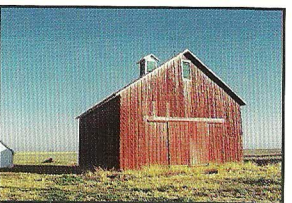
1200N-1600E



Double Valley Cross-Gable Built in 1900
This farm has been in the same family for 140 years. The original owner and great grandfather of the current owner lived on the farm until 1911. Complete exterior restoration. Colors maintain the

8. Robbins Grigg Barn

1400N-2150E



General Built in 1875
Built by a barn crew traveling the countryside, this barn is still owned by descendants of the original owner. It was painted in 1994 and the cupola was

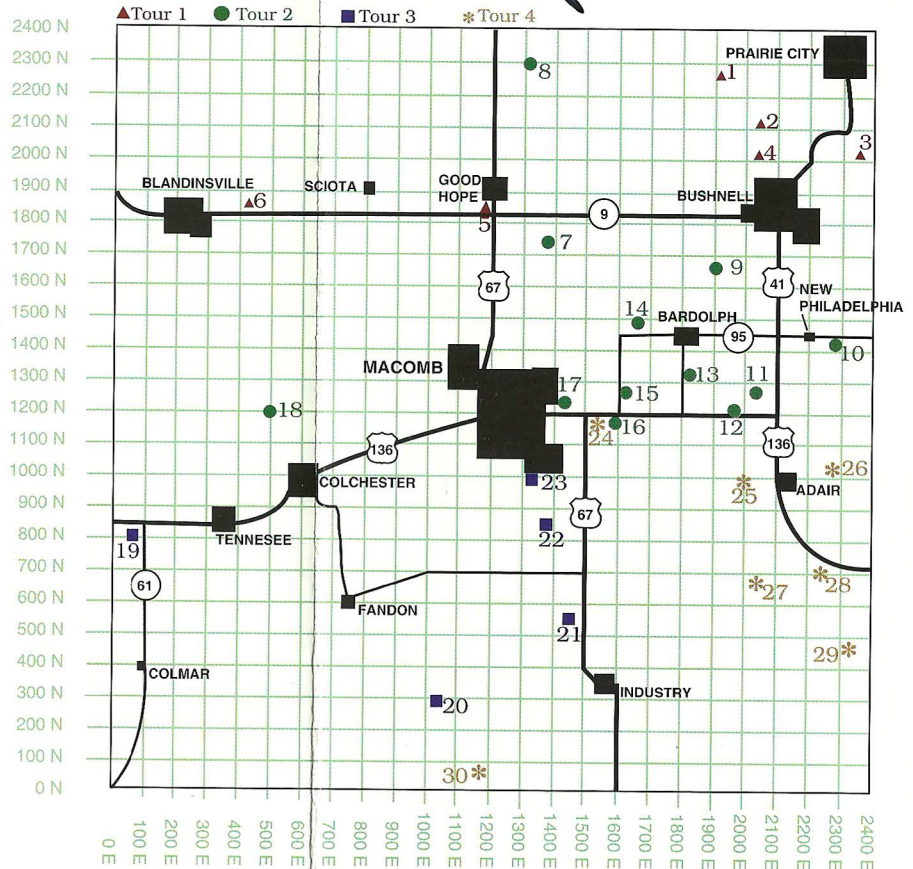
12. Kugler Barn

1200N-1950E



General Built in 1918
Locally known as the Prairie View, this barn features contrasting areas of clapboard, vertical siding, and loft window.

13. Hodges Barn



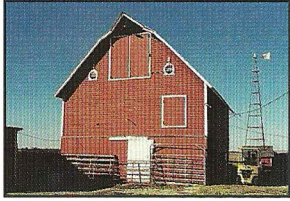
McDonough County Please note that this map represents McDonough County roads. For a more accurate map, please reference a McDonough County road map.

TOUR 4 * 24-30

recently rebuilt after a wind storm.

9. Bricker Barn

1700N-1825E



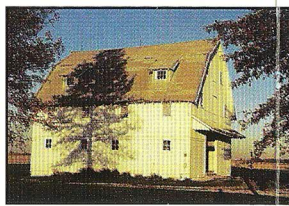
Gambrel Built in 1890s
This well-kept structure features uniquely designed round vent windows. Today it is used for hogs, sheep and hay storage.

10. Kipling Barn

1450N-2250E



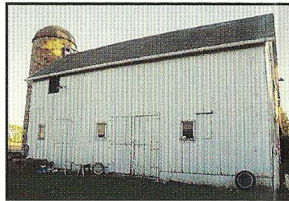
Three story Built in approximately 1920
Originally designed for general farm use, this barn features an internal grain elevator. It was converted to an egg laying house for hens around 1944.



Gambrel Built in 1919
Built at a cost of \$2,000. Unusual louvered loft vents and the two dormer windows help to light each side of the hayloft.

14. R. Hamilton Barn

1450N-1700E



Hip-Roof Built prior to 1912
This well maintained barn was already standing when R. Hamilton, grandfather of the present owner, purchased the farm. Silo built in 1917.

17. Burnham Barn

1200N-1375E



~~*Cross-gable Built in 1916*~~
The fancy cross-gable cupola sets this barn apart from other Newt Willis barns. Originally designed as a dairy barn, it is currently used for beef cattle.

18. Kleinkopf Barn

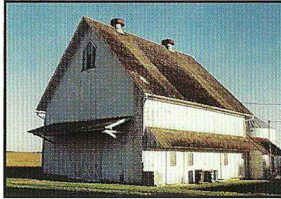
1200N-500E



True-Round Built in 1914
Built by Dick Carmack, this is one of the most unusual barns in McDonough County. It is listed on the Historical Register and has been noted in several articles on antique barns.

24. Ausbury Barn

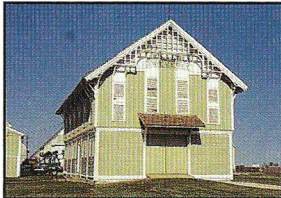
1200N-1500E



Square Built in 1918
The construction costs totaled \$1,200 from Wilbur Welzel. A barn dance christened the barn upon completion. The loft windows resemble those of a church.

25. Everly Barn

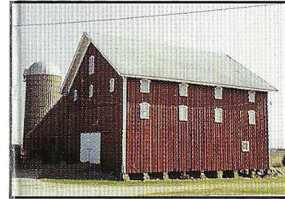
1050N-1950E



Stick-Style, Basilica Type Built in 1882
Built by Newt Willis and listed on the National Register of Historic Places. All buildings on this farmstead have been preserved and maintained.

26. Dilworth Barn

1050N-2250E



Gable Built in 1873
Barn constructed on a foundation of large sandstone blocks which were laid without mortar. The original cupola blew off in a storm prior to 1940.

27. Penington Barn

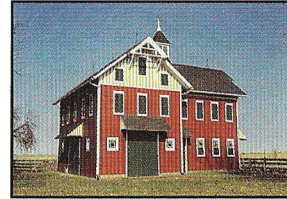
700N-2050E



Square Cross-Gable
This is another example of the unique cross-gable style, built only by Newt Willis & Nick Breasaw in this area.

28. Hammond Barn

700N-2250E



Stick-syle Built in 1889
Original condition except for a new foundation and door awnings. It is said the barn was built twice, since the first one burned down before it was used.

29. Warden Barn

500N-2350E

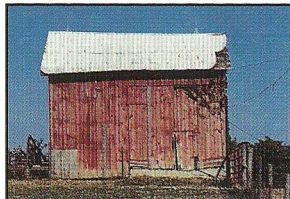


Gambrel Built in 1920
The similarities between this and the Hodges Barn (13) suggest they were built by the same person or from the same plans. Also known as Locust Grove Barn.

TOUR 3 19-23

19. Guy Barn

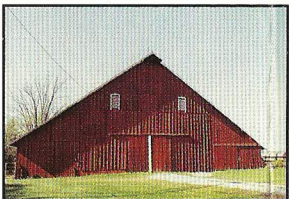
800N-100E



~~*Basement-type Built in 1871*~~
The original features are intact except for the removal of the cupola and driveway approach to the east entrance. Used today for livestock & hay storage.

20. Curtis Barn

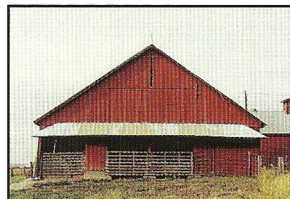
300N-1075E



General Built in approximately 1890
The original cupola has been removed, two additions have been constructed - the north section in 1911, and the south section in 1982.

21. Cullen Barn

550N-1475E



Simple Gable Built in 1914
The framework of this large tin-roofed barn was joined together and built with notched timbers.

22. Patrick Barn

900N-1300E



Gambrel Built in 1919
Built by Claude Landis. This huge barn could store 100 tons of loose hay or 200 tons of bales. Currently houses machinery.

23. Rutledge Barn

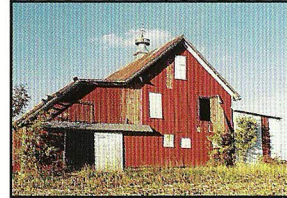
1050N-1300E



General Built early 1900s
Built by Fred Kline. The barn originally housed fancy matched draft horses.

30. Woodside Barn

125N-1650E



~~*Gambrel Built in 1918*~~
Built by Claude Landis. Construction costs equaled the value of a shipment of hogs to Chicago - slightly over \$3,800.